

Brochure 8.5" x 11" (Roll Fold)

DELETE THIS LAYER

BEFORE SUBMITTING

FINISHED SIZE: 11" x 8.5"

with bleed - 11.25" x 8.75"

Please leave a 1/4" (0.25") total bleed

1/8" (0.125") for each side

FIRST FOLD FROM LEFT TRIM - 3.58"

Fold Line

Fold Line

3.58"

3.70"

3.72"

Green Line is SAFETY Line

Green Line is SAFETY Line

Green Line is SAFETY Line

All important information that is not getting cut / fold should be inside this line

All important information that is not getting cut / fold should be inside this line

All important information that is not getting cut / fold should be inside this line

Blue Line is END OF BLEED Line

Background image / colour / artwork should extend to this line

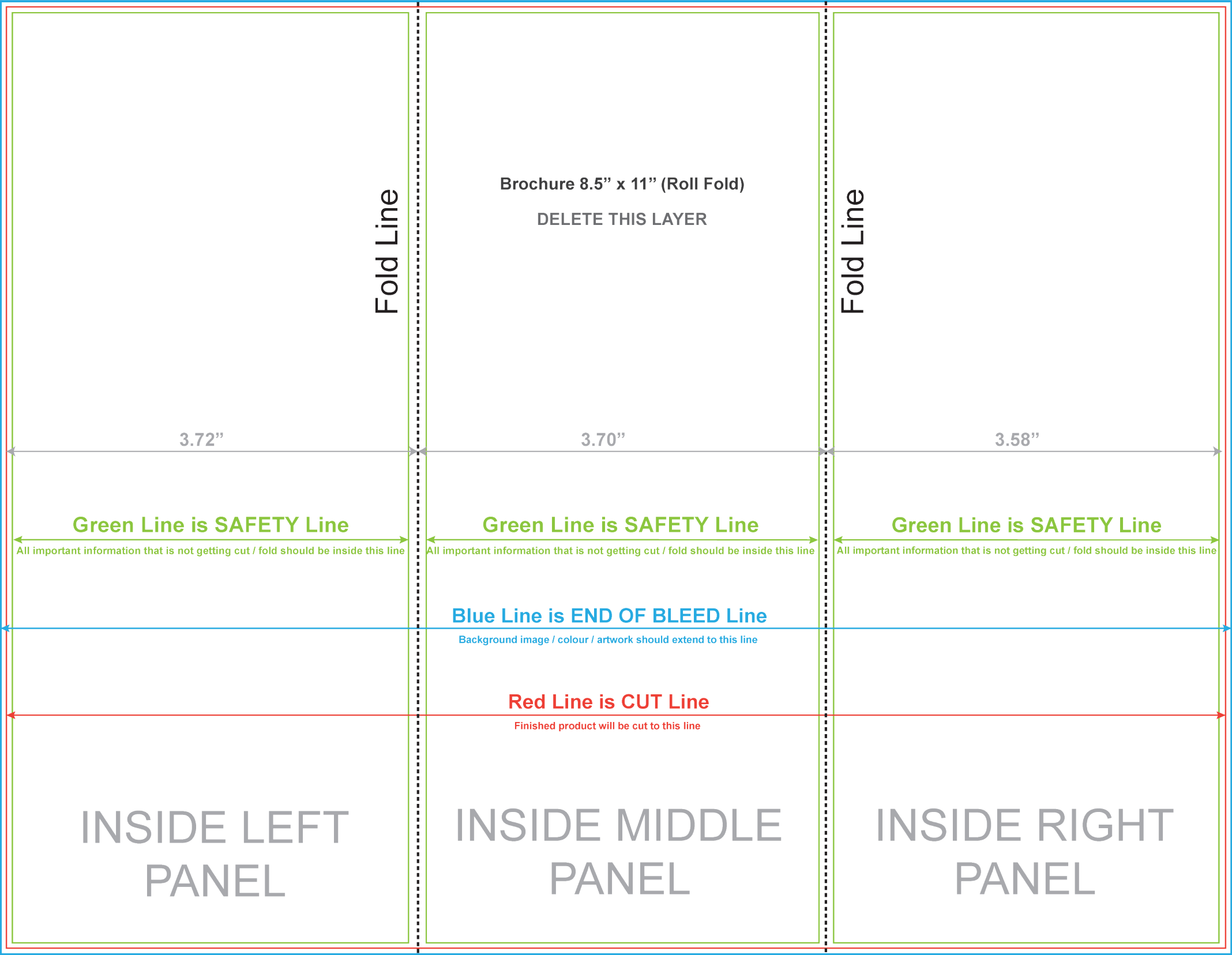
Red Line is CUT Line

Finished product will be cut to this line

OUTSIDE UNDER  
PANEL

OUTSIDE BACK  
PANEL

OUTSIDE FRONT  
PANEL



Brochure 8.5" x 11" (Roll Fold)

DELETE THIS LAYER

Fold Line

Fold Line

3.72"

3.70"

3.58"

Green Line is SAFETY Line

Green Line is SAFETY Line

Green Line is SAFETY Line

All important information that is not getting cut / fold should be inside this line

All important information that is not getting cut / fold should be inside this line

All important information that is not getting cut / fold should be inside this line

Blue Line is END OF BLEED Line

Background image / colour / artwork should extend to this line

Red Line is CUT Line

Finished product will be cut to this line

INSIDE LEFT  
PANEL

INSIDE MIDDLE  
PANEL

INSIDE RIGHT  
PANEL